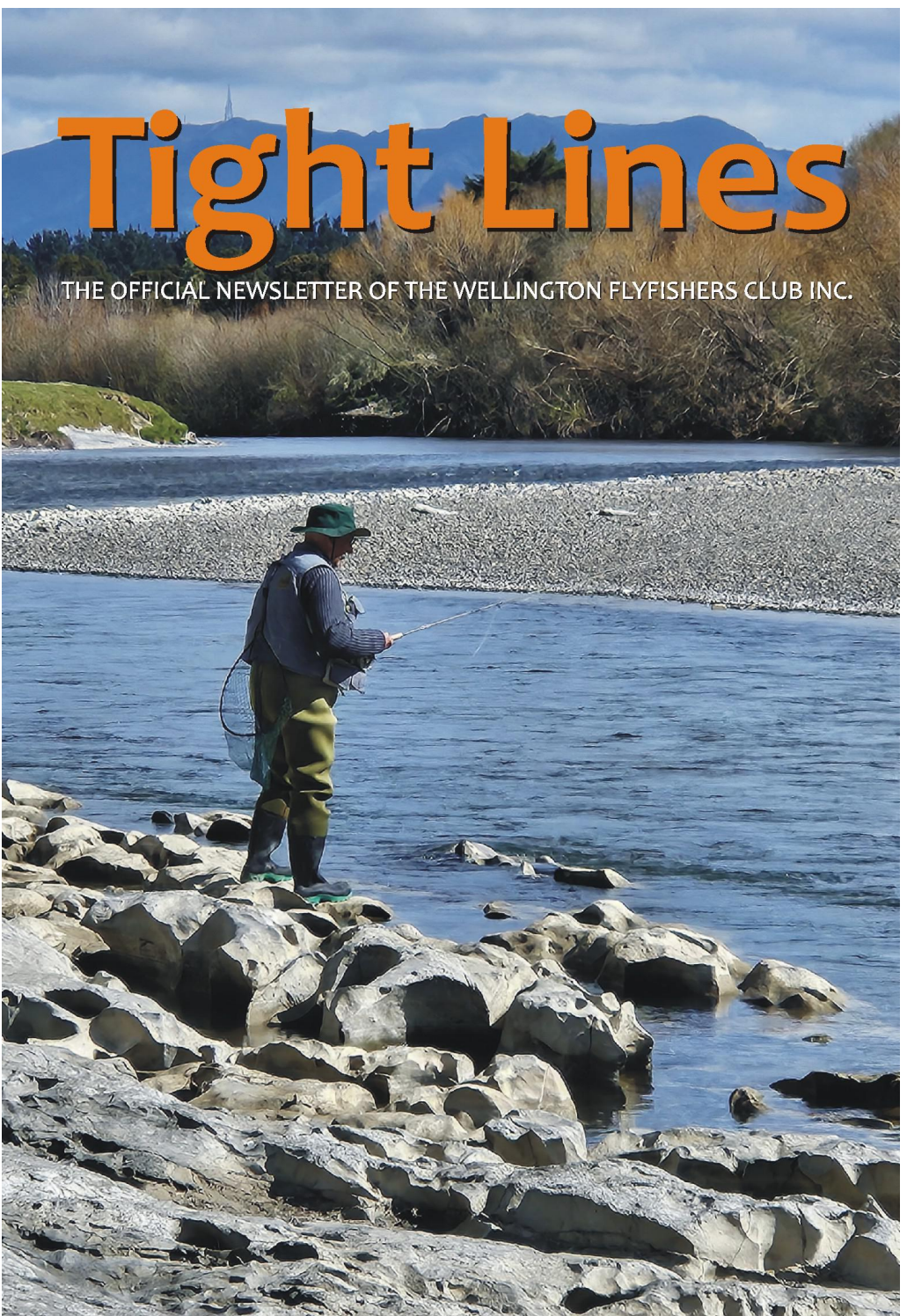


# Tight Lines

THE OFFICIAL NEWSLETTER OF THE WELLINGTON FLYFISHERS CLUB INC.



# TIGHT LINES

The official newsletter  
of the Wellington Flyfishers Club inc.  
February 2025



## CONTENTS

Club Meeting.....	2
President's Page.....	3
Heaviest Fish Entry.....	3
Report on Club Trip - December 2024 .....	4-6
Report on December 2024 Club Meeting.....	7
Fly of The Month.....	8
Hunting & Fishing.....	9
On-Stream Day .....	10
Useful Links.....	10
Club Meeting Venue.....	10
Newsletter Contributions.....	10
Committee Meeting.....	10
Helpdesk.....	11
Website.....	11
Club Membership.....	11
Fees 1 April 2024 - 31 March 2025.....	11
Receive the Newsletter via Email .....	12
Club Mission.....	12
Committee.....	12

**Cover:** Susi Lang (*Strato fishing the Manawatu River at Oringi*)  
*Any articles published in this newsletter are the opinions of the author alone and do not necessarily represent the views of the club as a whole or other members of the club.*

# CLUB MEETING

Monday 3 February, 7.30pm

Tararua Tramping Club Rooms – 4 Moncrief St,  
Mount Victoria, Wellington

## Club Members Reporting On Their Vacation Fishing Experiences

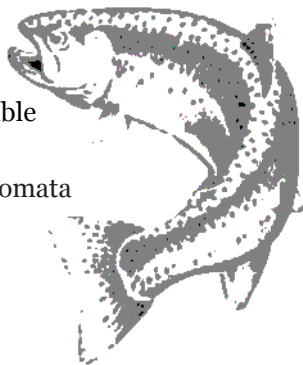
### EVENTS THIS MONTH

**Club Trip:** February 14/15/16 – Tukituki/  
Waipawa

**Fly Tying:** Monday 17 February - Adams Irresistible  
*for details see Fly of the Month...p12*

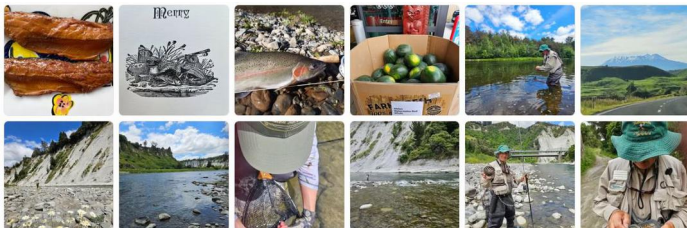
**On-Stream Day:** Sunday 23 February - Wainuiomata  
Phone Strato 386 3740 by the Wednesday prior.

**Casting Tuition:** Anyone wanting casting  
tuition please contact Strato 04 386 3740



## WFF FACEBOOK PAGE

<https://www.facebook.com/WellingtonFlyfishersClub>



# PRESIDENT'S PAGE

The December /January period is usually a period for relaxation. Some lucky ones can take some time off work and travel up and down our beautiful country with hopefully a bit of fishing thrown in.

This year it didn't quite work out this way. Persistent changeable weather dampened down holiday aspirations for some and even local Wellington conditions were not the best,

However some have been lucky enough to wet a line and their successes will be the main feature of our February club night.

I myself have had only one trip to the Wainuiomata, as the southerlies did not make it an attractive option. Cicadas were few and far between but at least one trout liked the look of a cicada recently tied at a club fly tying night. There were even signs of green beetle which resulted in the odd fish rising so hopefully as the weather settles down there is still some good local fishing to be had this summer.

What is quite evident however is that those who've had a chance to fish the Manawatu, Hawkes Bay and Rangitikei area have reported some of the best conditioned fish for some years so we will be looking forward to the days ahead.

*All the best  
Strato*

# HEAVIEST FISH ENTRY

Andrew Morrow – 28 September 2024 – Ohau River - 26.3lb  
Rainbow



# REPORT ON CLUB TRIP - DECEMBER 2024

Fishing the Whanganui/Whakapapa at this time of the year was always going to be different. Spawning runs have not started and it was a case whether there was enough resident fish to make it a successful trip.



Six of us, Susi, Strato, Phil, Rob, Nick and Jan booked in at the Taumaranui Holiday Park. Those of us that went up early on the Friday fished around the Lodge with no success in the early afternoon in very hot conditions with local children making good use of the great swimming conditions in some of the pools.

Later in the afternoon Strato lost a couple of good fish, fishing up stream of the camp.

One of the locals we spoke to indicated that there had been some good fishing at Kakahi so Saturday we all headed in that direction. Strato had fished the area before and he and Susi intended fishing some of the pools that he'd been successful previously.



Unfortunately a navigation error after having crossed the main river, meant it took us two hours of difficult trekking to get to pools which should have taken us twenty minutes, only to find that other anglers were fishing the pools. The morning was therefore a disaster but later in the afternoon they fished the area where Strato had lost the two fish the previous night and two small browns came to the net, the third one lost.



Back at the Whakapapa, Jan had landed a nice 3lb fish which turned out to be the biggest fish for the trip while Rob had lost a very nice fish just down from the car area. Nick and Jan had also tried Stonejug Road which was very overgrown and did not produce anything.



It had been our intention to all fish Stonejug Road on the way home on Sunday but we decided the better option was to fish the Rangitikei with Susi catching two small rainbows at Mangaweka and losing a third and Phil with the exact same results at Toi Toi road. Rob also caught a small rainbow at Mangaweka so the trip home did have some success.



Strato



# REPORT ON DECEMBER 2024 CLUB MEETING

The club's December meeting was a presentation by four of our women club members followed by the Christmas party.



Heather, Jeannie, Julia and Susi are part of Women on the Fly, a community of women across New Zealand who love fly fishing.



They had attended a Women on The Fly workshop at TALTAC and they gave us an excellent account of their workshop and how WoTF operates.



This was followed by our annual Christmas function and thanks must go to all who provided the excellent supper.



# FLY OF THE MONTH

Fly tying is sponsored by [Fishscene](#)



**Monday 17 February, 7.30pm** - Tararua Tramping Club Locker Room (Access through side door on north side of building)

## Adams Irresistible Dry Fly

One of the most universal dry flies used throughout the world to imitate a series of insects. The high floatancy of the deer hair keeps them afloat for long periods but the use of other floatant products is also often used.

Particularly good on fish taking flies off the surface rather than emergers, as the fly sits high on the water.



### Materials

Hook	Standard dry fly hook #14, #12
Tail	Moose body fibres
Body	Deer hair
Wings	Hen cape tippets
Hackle	Brown and grizzly feathers



***PRIMAL ROD, REEL & LINE SETS***

***Quest 9' 8# was \$319.99  
Now \$219.99***

***Rookie 9' 6# was \$299.99  
Now \$199.99***

***Bold 7'9" 4# was \$399.99  
Now \$299.99***

***Full range of DESOLVE and SIMMS  
waders & boots***

Other than for specials, Club discount 10% is available on flyfishing purchases with your membership card.

**The Flyfishing Experts  
Hutt Valley Hunting & Fishing NZ  
8 Te Puni Street, Petone.**

P O Box 33 206, Petone, Wellington, New Zealand  
Telephone: 0064-4-589 9500

## ON-STREAM DAY

**Next onstream day** – Sunday 23 February - Wainuiomata.

Onstream days are opportunities for members who are new to flyfishing to learn from an experienced angler. It is your responsibility to have a current NZ sports fishing licence. These can be purchased from Hunting & Fishing, 444 Cuba St Alicetown, or online from Fish & Game. Contact Strato (386-3740) before 9pm on the Wednesday prior to get details of where to meet. Limited numbers can be accommodated and acceptance will be on a first come first served basis

## USEFUL LINKS

For a list of useful links including licences, river flow levels, weather sites and organisations please visit the club website.

<https://wellingtonflyfishers.org/links>

## CLUB MEETING VENUE

Tararua Tramping Club rooms - 4 Moncrieff St, Mount Victoria, Wellington. For a detailed map and instructions on getting there please visit the club website <https://wellingtonflyfishers.org/club-meetings/>

## NEWSLETTER CONTRIBUTIONS

Please visit the Website for details relating to newsletter submissions <https://wellingtonflyfishers.org/newsletter/>

## COMMITTEE MEETING

6 pm, second Monday every month. For additional details please see the club website <http://wellingtonflyfishers.org.nz/committee>



## HELPPDESK

Helpdesk is an opportunity for those attending club meetings to have their questions answered. This is a chance for newer members to have fly fishing mysteries unravelled. Tying techniques and problems, rigs, knots, fly selection, issues, casting, how to and where to go. Bring your problems and try the Helpdesk out.

## WEBSITE

The club website and facebook pages provide online information, contact details and useful inks. <http://wellingtonflyfishers.org.nz>

## CLUB MEMBERSHIP

To join the club: collect a form at a club meeting; download a copy from the club website; or phone a committee member. Mail the completed form to PO Box 14006, Kilbirnie, Wellington 6241, or hand it in at the next meeting with your subscription and joining fee.

**Meetings** are held at 7.30 pm on the first Monday of every month except January at the Tararua Tramping Club rooms, 4 Moncreiff Street, Mt. Victoria, Wellington.

**Tight Lines**, the club newsletter is published monthly, except January, and is also available to club members via email as a pdf – contact the editor to be added to the distribution list.

## FEES 1 APRIL 2024 - 31 MARCH 2025

Full member or family membership	Junior membership	Joining fee	Overseas Newsletter (Email only)
\$35	no fee.	\$10	\$35

**Enquiries** [wellingtonflyfishersclub@gmail.com](mailto:wellingtonflyfishersclub@gmail.com)

## RECEIVE THE NEWSLETTER VIA EMAIL

As a club member you should receive a copy of the club newsletter via email if you are not receiving club emails please see the website for details. <https://wellingtonflyfishers.org/newsletter/>

## CLUB MISSION

To establish, maintain and conduct a club for the encouragement and promotion of flyfishing and all activities pertaining thereto.

## COMMITTEE

<b>President</b>	<b>Strato Cotsilinis</b>	<b>386 3740</b>
Past President	Paul Baker	970 2595
Vice President	John Gamble	027 517 5825
Secretary	Heather Millar	386 3049
Treasurer	Carmen Cotsilinis	027 611 8088
Newsletter Editor	Linda Brown	027 230 4770
Librarian	Warren Horne	386 3049
Website	Scott Garelli	021 325 032
Facebook Editor	Susi Lang	027 564 6008
Club Trips	Strato Cotsilinis	386 3740
Helpdesk	Hal Levine	027 4200 482
Fly Tying & Casting	Strato Cotsilinis	386 3740
Club Competitions	Paul Baker	970 2595
Committee	Peter Buxton	027 472 3455
Committee	Rod Lawson	021 119 4115
Committee	Peter Irwin	021-499-582



**WELLINGTON FLYFISHERS CLUB (INC).**  
PO Box 14006, Kilbirnie, Wellington 6241, New Zealand